

 comas



GLOBAL  
TABLEWARE  
COLLECTIVE





# GLOBAL TABLEWARE COLLECTIVE



Global Tableware Collective (GTC) is a pioneering initiative in the hospitality industry, dedicated to enhancing the tabletop market through collaboration and innovation. Our mission is to empower under-represented brands by providing them with a platform to thrive collectively, which enables access to resources, expertise, and distribution channels previously out of reach. With showrooms in Chicago, IL & Youngstown, OH, GTC is prepared to redefine standards of excellence in the hospitality industry, one table setting at a time.

GTC's product portfolio begins with our cornerstone brand, Stölzle Lausitz, which exemplifies our values of quality, craftsmanship, and innovation. As we grow, we will continue to curate and expand the collection, ensuring each addition aligns with our high standards. With these strategic partnerships and dedicated support, GTC aims to offer a diverse range of products that cater to various dining experiences, from high-end restaurants to casual eateries. The GTC portfolio represents the beginning of a journey towards redefining excellence in hospitality tabletop offerings.



With nearly 35 years of experience, Comas delivers high-performing, scalable solutions for hospitality professionals across the globe. Present in 50+ countries, the brand combines innovation, design, and production expertise to support every area of service, from kitchen to table, and buffets to banquets.

Driven by creativity and collaboration, Comas creates tools that empower chefs, mixologists, and culinary visionaries alike. Their broad offering of flatware, serving utensils, and accessories is rooted in versatility, precision, and a deep understanding of professional needs. Whether it's a fine dining venue or a high-volume operation, Comas offers practical, beautiful solutions designed for the heart of hospitality.

At GTC, we proudly partner with Comas to bring their signature blend of professionalism and passion to the North American market.



cutler INOX

## Comas

### 18/10 FLATWARE

Atlántida .....	9
Dalia .....	25
Fleur de Lys .....	23
Ibiza .....	37
Iris .....	27
Kyoto .....	47
Lab .....	11
Lab Accessories .....	15
London .....	31
Maranta .....	29
Sakura .....	17
Tulip .....	35
Violet .....	33

### 18/0 FLATWARE

Bcn Satin .....	39
Canada .....	41
Kodai .....	19
Oslo Eco .....	40
Santorini .....	43
Sevilla .....	45

### STEAK KNIVES

Chuletero HQ .....	51
Everest .....	49

### SERVING UTENSILS

Elegant .....	52
Les Essences .....	54

### BUFFET

Glass Jar .....	59
Ambar .....	60
Care & Use .....	62





# Atlántida

18/10 SS | 6 MM | MIRROR

- Elegant, fluid lines with a minimalist profile
- Textured stainless steel adds a refined, modern finish
- Crafted to elevate everyday dining and professional service



**Table Knife**  
8 7/8"  
MPA8586



**Table Spoon**  
8 1/2"  
MPA8587



**Table Fork**  
8 5/8"  
MPA8588



**Sauce Spoon**  
8 1/2"  
MPA8656



**Dessert Knife**  
6 5/8"  
MPA8589



**Dessert Spoon**  
6 3/8"  
MPA8591



**Dessert Fork**  
6 1/4"  
MPA8590



**Coffee Spoon**  
4 1/4"  
MPA8592



# Lab

18/10 SS | 2 MM | MIRROR

- Sleek, modern silhouette with a refined edge
- Available in Mirror, Vintage Gold, and Ice Black finishes
- Distinct textures create a bold visual and tactile experience
- Perfect for contemporary dining and elevated plating



**Table Knife**  
6 1/4"  
MPA7890\*



**Table Spoon**  
6"  
MPA6978



**Table Fork**  
6 1/8"  
MPA6977



**Rice Fork**  
5 7/8"  
MPA6979



**Cocktail Stick**  
3 7/8"  
MPA6980



**Cocktail Stick**  
5 3/8"  
MPA6981



**Appetizer Fork**  
5 3/8"  
MPA6982



**Appetizer Spoon**  
5 3/8"  
MPA6983



**Coffee Spoon**  
4"  
MPA6984



**Dessert Knife**  
5 3/8"  
MPA7891\*



**Dessert Knife**  
5 3/8"  
MPA6987



**Dessert Spoon**  
4 7/8"  
MPA6985



**Dessert Fork**  
4 7/8"  
MPA6986



**Coffee Spatula**  
4 1/4"  
MPA6989



**Cocktail Stick**  
8 1/2"  
MPA6988



**Long Caliper**  
8 3/4"  
MPA6995



**Short Caliper**  
6 1/4"  
MPA6996



**Spatula Caliper**  
6 1/4"  
MPA6997



**Tasting Spoon**  
3 3/8"  
MPA6998



**Oval Tasting Spoon**  
4"  
MPA6999

# Lab

18/10 SS | 2 MM | VINTAGE

## Vintage Gold



**Table Knife**  
6 1/4"  
MPA1539\*



**Table Spoon**  
6"  
MPA1540



**Table Fork**  
6 1/8"  
MPA1541



**Rice Fork**  
5 7/8"  
MPA1542



**Cocktail Stick**  
3 7/8"  
MPA1543



**Cocktail Stick**  
5 3/8"  
MPA1544



**Appetizer Fork**  
5 3/8"  
MPA1545



**Appetizer Spoon**  
5 3/8"  
MPA1546



**Coffee Spoon**  
4"  
MPA1547



**Dessert Knife**  
5 3/8"  
MPA1548\*



**Dessert Spoon**  
4 7/8"  
MPA1549



**Dessert Fork**  
4 7/8"  
MPA1550



**Cocktail Stick**  
8 1/2"  
MPA1551



**Coffee Spatula**  
4 1/4"  
MPA1552



**Tasting Spoon**  
3 3/8"  
MPA1553



**Oval Tasting Spoon**  
4"  
MPA1554



# Lab

18/10 SS | 2 MM | VINTAGE

## Ice Black



**Table Knife**  
6 1/4"  
MPA8640\*



**Table Spoon**  
6"  
MPA8641



**Table Fork**  
6 1/8"  
MPA7665



**Rice Fork**  
5 7/8"  
MPA8642



**Cocktail Stick**  
3 7/8"  
MPA8643



**Cocktail Stick**  
5 3/8"  
MPA8644



**Appetizer Fork**  
5 3/8"  
MPA8645



**Appetizer Spoon**  
5 3/8"  
MPA8646



**Coffee Spoon**  
4"  
MPA8647



**Dessert Knife**  
5 3/8"  
MPA8648\*



**Dessert Spoon**  
4 7/8"  
MPA8649



**Dessert Fork**  
4 7/8"  
MPA8650



**Cocktail Stick**  
8 1/2"  
MPA8651



**Coffee Spatula**  
4 1/4"  
MPA8652



**Tasting Spoon**  
3 3/8"  
MPA8653



**Oval Tasting Spoon**  
4"  
MPA8654





reddot design award  
winner 2022



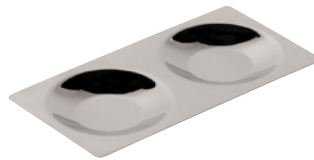
# Lab Accessories

18/10 SS | MIRROR

- Modular design for mix-and-match presentation
- Available in a variety of materials, textures, and colors
- Ideal for tapas, canapés, and small-plate service



**1/2 Ration Oval Plate and Stick Holder**  
L 11" W 3 5/8" H 3/8"  
MPA8006



**1/4 Ration Double Plate**  
L 7 1/4" W 3 5/8" H 3/8"  
MPA8004



**1/4 Ration Circle Plate**  
LW 3 5/8" H 1/2"  
MPA8000



**Round Stick Holder**  
D 2 3/4" H 3/4"  
MPA8001  
Fits MPA8004 & MPA8000







# Sakura

18/10 SS | 5 MM | MIRROR

- Delicate floral-inspired detailing for a refined touch
- Mirror finish adds shine and sophistication
- Brings seasonal elegance to the table
- Ideal for upscale dining and special occasions



**Table Knife**  
9"  
MPA6931



**Table Spoon**  
8 1/8"  
MPA6932



**Table Fork**  
8 1/4"  
MPA6933



**Ramen Spoon**  
7 1/2"  
MPA6934



**Dessert Fork**  
6"  
MPA6939



**Coffee Spoon**  
4 1/8"  
MPA6941



**Tea Spoon**  
5 3/4"  
MPA6940



**Chopsticks Set**  
9"  
MPA6935



**Chopsticks Plate**  
3 7/8"  
MPA6936



**Cutlery Holder**  
3 1/8"  
MPA7869





# Kodai

18/0 SS | 3 MM | VINTAGE

- Brushed vintage finish with timeless character
- Available in Vintage, Vintage Gold, and Vintage Black
- Adds antique charm to rustic and casual settings
- A standout choice for farm-to-table or heritage-inspired concepts



**Table Knife**  
8 3/8"  
MPA7276



**Table Spoon**  
7 1/2"  
MPA7279



**Table Fork**  
7 5/8"  
MPA7285



**Table Knife**  
7 1/4"  
MPA6943



**Table Spoon**  
6 3/4"  
MPA6944



**Table Fork**  
7"  
MPA6945



**Table Fork**  
6 3/8"  
MPA6946



**Butter Knife**  
6 1/8"  
MPA6947



**Dessert Knife**  
5 1/4"  
MPA6948



**Dessert Fork**  
5 3/8"  
MPA6949



**Coffee Spoon**  
4 1/2"  
MPA6950



**Coffee Spoon**  
3 7/8"  
MPA6952



**Side Spoon**  
3 3/4"  
MPA6951



**Rice Spoon**  
3 1/2"  
MPA6953



**Wide Fork**  
4 1/2"  
MPA6954

# Kodai

18/0 SS | 3 MM | VINTAGE

## Vintage Gold



**Table Knife**  
8 3/8"  
MPA7278



**Table Spoon**  
7 1/2"  
MPA7281



**Table Fork**  
7 5/8"  
MPA7287



**Table Knife**  
7 1/4"  
MPA7081



**Table Spoon**  
6 3/4"  
MPA7082



**Table Fork**  
7"  
MPA7083



**Table Fork**  
6 3/8"  
MPA7084



**Butter Knife**  
6 1/8"  
MPA7085



**Dessert Knife**  
5 1/4"  
MPA7086



**Dessert Fork**  
5 3/8"  
MPA7087



**Coffee Spoon**  
4 1/2"  
MPA7088



**Coffee Spoon**  
3 7/8"  
MPA7090



**Side Spoon**  
3 3/4"  
MPA7089



**Rice Spoon**  
3 1/2"  
MPA7091



**Wide Fork**  
4 1/2"  
MPA7092



# Kodai

18/0 SS | 3 MM | VINTAGE

## Vintage Black



**Table Knife**  
8 3/8"  
MPA7277



**Table Spoon**  
7 1/2"  
MPA7280



**Fork 3 Prongs**  
7 5/8"  
MPA7286



**Table Knife**  
7 1/4"  
MPA7069



**Table Spoon**  
6 3/4"  
MPA7070



**Table Fork**  
7"  
MPA7071



**Table Fork**  
6 3/8"  
MPA7072



**Butter Knife**  
6 1/8"  
MPA7073



**Dessert Knife**  
5 1/4"  
MPA7074



**Dessert Fork**  
5 3/8"  
MPA7075



**Coffee Spoon**  
4 1/2"  
MPA7076



**Coffee Spoon**  
3 7/8"  
MPA7078



**Side Spoon**  
3 3/4"  
MPA7077



**Rice Spoon**  
3 1/2"  
MPA7079



**Wide Fork**  
4 1/2"  
MPA7080





# Fleur de Lys

18/10 SS | 4.5 MM | MIRROR

- Classic design that suits both casual and formal settings
- Mirror finish delivers a polished, elegant look
- Timeless style that adapts to any tabletop
- A versatile staple for everyday or elevated service



**Table Knife**  
9 1/4"  
MPA7980



**Table Spoon**  
8 1/2"  
MPA7981



**Table Fork**  
8 3/8"  
MPA7982



**Dessert Knife**  
8 1/4"  
MPA7983



**Dessert Spoon**  
7 1/2"  
MPA7984



**Dessert Fork**  
7 3/8"  
MPA7985



**Dessert Fork**  
6 1/8"  
MPA7986



**Tea Spoon**  
5 7/8"  
MPA7987



**Coffee Spoon**  
4 5/8"  
MPA7988





# Dalia

18/10 SS | 8.5 MM | MIRROR | FORGED

- Smooth, curved handles with a clean, minimalist profile
- Ergonomic design ensures comfort in use
- A modern essential for sleek, refined tabletops



**Table Knife**  
9 1/4"  
MPA7057



**Table Spoon**  
8 1/8"  
MPA7058



**Table Fork**  
8"  
MPA7059



**Dessert Knife**  
8 1/4"  
MPA7060



**Dessert Spoon**  
7 1/8"  
MPA7061



**Dessert Fork**  
7 1/8"  
MPA7062



**Dessert Fork**  
6 1/8"  
MPA7063



**Coffee/Tea Spoon**  
6 1/8"  
MPA7064



**Coffee Spoon**  
4 1/4"  
MPA7065





# Iris

18/10 SS | 6 MM | MIRROR

- Squared-handle shape offers a clean, contemporary feel
- Mirror finish provides a sleek, polished look
- Durable construction built for daily service



**Table Knife**  
9 5/8"  
MPA7022



**Table Spoon**  
8 1/4"  
MPA7023



**Table Fork**  
8 1/4"  
MPA7024



**Dessert Knife**  
8 1/4"  
MPA7027



**Dessert Spoon**  
7 1/4"  
MPA7028



**Dessert Fork**  
7 1/4"  
MPA7029



**Dessert Fork**  
6"  
MPA7030



**Tea Spoon**  
6"  
MPA7031



**Coffee Spoon**  
4 1/4"  
MPA7032





# Maranta

18/10 SS | 4 MM | MIRROR

- Round, tapered design with a clean, polished finish
- 18/10 stainless steel offers lasting strength and brilliance
- Balances comfort in hand with elevated tabletop style



**Table Knife**  
9 3/8"  
MPA6485



**Table Spoon**  
8 3/8"  
MPA6486



**Table Fork**  
8 3/8"  
MPA6487



**Dessert Knife**  
8 3/8"  
MPA6490



**Dessert Spoon**  
7 1/2"  
MPA6491



**Dessert Fork**  
7 1/2"  
MPA6492



**Dessert Fork**  
5 1/2"  
MPA6493



**Tea Spoon**  
5 1/2"  
MPA6494



**Coffee Spoon**  
4 1/2"  
MPA6495





# London

18/10 SS | 4 MM | MIRROR

- Timeless design that stays in style season after season
- Versatile look fits seamlessly into casual or formal settings
- A reliable choice for everyday service or special occasions



**Table Knife**  
9"  
MPA6701



**Table Spoon**  
8 1/4"  
MPA6702



**Table Fork**  
8 1/4"  
MPA6703



**Dessert Spoon**  
7 3/8"  
MPA6705



**Dessert Fork**  
7 3/8"  
MPA6706



**Tea Spoon**  
5 7/8"  
MPA6708





# Violet

18/10 SS | 4 MM | MIRROR

- Sleek, modern design with graceful lines
- Creates a striking impression in romantic or upscale settings
- Perfect for adding elegance to contemporary tabletops



**Table Knife**  
9 1/2"  
MPA7046



**Table Spoon**  
8 3/8"  
MPA7047



**Table Fork**  
8 3/8"  
MPA7048



**Dessert Knife**  
8 1/4"  
MPA7051



**Dessert Spoon**  
6 7/8"  
MPA7052



**Dessert Fork**  
6 7/8"  
MPA7053



**Tea Spoon**  
5 3/4"  
MPA7055



**Coffee Spoon**  
4 3/4"  
MPA7056





# Tulip

18/10 SS | 4 MM | MIRROR

- Petal-inspired ends with clean lines
- A simple, yet elegant shape to suit any environment
- Comfortable to hold, enhancing the dining experience



**Table Knife**  
9 3/8"  
MPA7034



**Table Spoon**  
8 1/8"  
MPA7035



**Table Fork**  
8 1/8"  
MPA7036



**Dessert Knife**  
7 5/8"  
MPA7039



**Dessert Spoon**  
7"  
MPA7040



**Dessert Fork**  
7"  
MPA7041



**Tea Spoon**  
5 3/8"  
MPA7043



**Coffee Spoon**  
4 3/8"  
MPA7044





# Ibiza

18/10 SS | 3.5 MM | MIRROR

- Light and casual styling
- Ideal for casual dining, beach resorts, and outdoor settings
- Easy to clean and maintain for busy, informal environments



**Table Knife**  
8 5/8"  
MPA0268



**Table Spoon**  
7 7/8"  
MPA2736



**Table Fork**  
7 7/8"  
MPA2735



**Dessert Knife**  
8"  
MPA5807



**Dessert Spoon**  
7 1/4"  
MPA2740



**Dessert Fork**  
7 1/4"  
MPA2738



**Tea Spoon**  
5 1/2"  
MPA2743



**Coffee Spoon**  
4 3/8"  
MPA2744





# Ben Satin

18/0 SS | 3 MM | SATIN

- Modern satin finish available in Champagne or Black
- Makes a bold statement in contemporary dining spaces
- Combines striking style with everyday durability

## Champagne



**Table Knife**  
8 3/4"  
MPA6711



**Table Spoon**  
7 7/8"  
MPA6712



**Table Fork**  
7 7/8"  
MPA6713



**Dessert Spoon**  
7 1/4"  
MPA6715



**Dessert Fork**  
7 1/4"  
MPA6716



**Coffee Spoon**  
5 1/2"  
MPA6718

## Black



**Table Knife**  
8 3/4"  
MPA6102



**Table Spoon**  
7 7/8"  
MPA6103



**Table Fork**  
7 7/8"  
MPA6104



**Dessert Spoon**  
7 1/4"  
MPA6354



**Dessert Fork**  
7 1/4"  
MPA6355



**Coffee Spoon**  
5 1/2"  
MPA6106

# Oslo Eco

18/0 SS | 7 MM | MIRROR | FORGED

- Rounded handles with a clean, modern feel
- Crafted from nickel-free 18% stainless steel for lower environmental impact
- Ideal for venues seeking style with a sustainability-driven approach



**Table Knife**  
9 1/4"  
MPA5474



**Table Spoon**  
8 1/4"  
MPA1336



**Table Fork**  
8 1/4"  
MPA1337



**Dessert Fork**  
5 7/8"  
MPA2568



**Tea Spoon**  
5 3/4"  
MPA1338



# Canada

18/0 SS | 4 MM | MIRROR

- Traditional silhouette with balanced, comfortable weight
- Even weight distribution offers better control and ease of use
- Ideal for high-volume dining and everyday service



**Table Knife**  
9 1/8"  
MPA6540



**Table Spoon**  
8 1/8"  
MPA6541



**Table Fork**  
8"  
MPA6542



**Tea Spoon**  
5 3/4"  
MPA6547





# Santorini

18/0 SS | 3.5 MM | MIRROR

- Mirror-polished finish with hammered design
- Adds vibrancy and charm to casual luxury settings
- Perfect for relaxed yet refined dining presentations



**Table Knife**  
9 1/4"  
MPA10642



**Table Spoon**  
7 7/8"  
MPA10643



**Table Fork**  
7 7/8"  
MPA10644



**Dessert Knife**  
8 1/4"  
MPA10832



**Dessert Spoon**  
7 1/8"  
MPA10833



**Dessert Fork**  
7 1/8"  
MPA10834



**Tea Spoon**  
5 1/2"  
MPA10646



**Coffee Spoon**  
4 5/8"  
MPA10647





# Sevilla

18/0 SS | 3 MM | MIRROR

- Clean, streamlined design with a mirror polish finish
- Suits banquets, fine dining, and elevated casual settings
- A versatile choice that complements a wide range of tabletops



**Steak Knife**  
9"  
MPA5631



**Table Knife**  
8 7/8"  
MPA0094



**Table Spoon**  
8 1/4"  
MPA9657



**Table Fork**  
8 1/4"  
MPA9658



**Dessert Knife**  
7 3/4"  
MPA0099



**Dessert Spoon**  
7"  
MPA9662



**Dessert Fork**  
7 1/4"  
MPA9663



**Tea Spoon**  
5 3/8"  
MPA9665



**Coffee Spoon**  
4 1/2"  
MPA9666



**Soup Ladle**  
10 1/4"  
MPA1626



**Serving Spoon**  
9 1/4"  
MPA1627



**Serving Fork**  
9 1/4"  
MPA1628



**Cake Server**  
9 1/2"  
MPA1629



**Sauce Ladle**  
6 3/4"  
MPA1632





# Kyoto

18/10 SS | 5.5 MM | MIRROR | SATIN

- Slender design & satin finish for a refined look
- Complements sushi, fusion, and contemporary cuisine
- Ideal for creating a minimalist, elegant tabletop



**Chopsticks Set  
Satin**  
9"  
MPA7421



**Chopsticks Set  
Black**  
9"  
MPA7422



**Chopsticks Set  
Copper**  
9"  
MPA7423



**Chopsticks Set  
Gold**  
9"  
MPA7424



**Chopsticks Rest  
Satin**  
2 3/8"  
MPA7554



**Chopsticks Rest  
Black**  
2 3/8"  
MPA7555





# Everest

18/10 SS | MIRROR

- Sleek and modern design
- Perfect for upscale steakhouse settings
- Durable construction ensures long-lasting elegance and performance



**Steak Knife**  
8 5/8"  
MPA11582



**Steak Fork**  
8 1/8"  
MPA11583

**Pairs well with Atlántida** | See page 9



# Chuletero HQ

- Heavy-weight cutlery built for steak and hearty entrées
- Durable design ensures long-lasting performance in busy service
- Provides strength and precision for slicing through tough cuts with ease



## **Aneto Mikarta Steak Knife**

5Cr15Mov High Hardness Steel | Wood Handle | 9 1/4"  
MPA8508



## **Denali Steak Knife**

3Cr13 Stainless Steel | Wood Handle | 6 1/4"  
MPA10971



## **Alps Steak Knife**

3Cr13 Stainless Steel | Wood Handle | 9"  
MPA3000



## **K2 Steak Knife**

3Cr13 Stainless Steel | Acrylic Handle | 8 7/8"  
MPA3137



## **Zermitt Steak Knife**

3Cr13 Stainless Steel | Acrylic Handle | 8 7/8"  
MPA6163



# Chuletero HQ



**Acr Steak Knife**  
3Cr13 Stainless Steel | ABS Handle | 8 7/8"  
MPA3010



**Satin Steak Knife**  
420 Stainless Steel | 8 3/4"  
MPA2999



**Acr White Steak Knife**  
3Cr13 Stainless Steel | ABS Handle | 8 7/8"  
MPA7442



**Satin Copper Steak Knife**  
420 Stainless Steel | 8 3/4"  
MPA7431



**Acr Red Steak Knife**  
3Cr13 Stainless Steel | ABS Handle | 8 7/8"  
MPA7443



**Gold Steak Knife**  
420 Stainless Steel | 8 3/4"  
MPA7432



**Sutil Steak Knife**  
420 Stainless Steel | 9 1/8"  
MPA3107



**Gun Metal Steak Knife**  
420 Stainless Steel | 8 3/4"  
MPA7433



**Rambo Steak Knife**  
420 Stainless Steel | 8 7/8"  
MPA2818



**Perfect Steak Knife**  
420 Stainless Steel | 8 7/8"  
MPA2072

# Elegant

18/10 SS | INOX 201 | 2 MM | PVD

- Serving utensils with a modern profile
- Various PVD finishes add subtle sophistication to casual dining & banquets
- Versatile style that blends seamlessly with any tabletop





## Black



**Serving Spoon**

11 3/4" | MPA5261

**Spatula**

11" | MPA5259

**Soup Ladle**

10 3/8" | MPA5260

**Cake Tongs**

9 1/2" | MPA6780

## Champagne



**Serving Spoon**

11 3/4" | MPA5267

**Spatula**

11" | MPA5265

**Soup Ladle**

10 3/8" | MPA5266

**Cake Tongs**

9 1/2" | MPA6781

## Copper



**Serving Spoon**

11 3/4" | MPA5264

**Spatula**

11" | MPA5262

**Soup Ladle**

10 3/8" | MPA5263

**Cake Tongs**

9 1/2" | MPA6782

# Les Essences

18/10 SS | 1.2 MM | VINTAGE | PVD

- Contemporary accessories designed with catering professionals in mind
- Thoughtfully proportioned for versatility and visual balance
- Pieces nest and stack for easy storage and efficient service
- Various finishes to suit any venue



**bahígüell +  comas**



## Vintage



**Long-Handled Tasting Spoon**  
4 3/4"  
MPA7565



**Long-Handled Tasting Spoon w/ Holes**  
4 3/4"  
MPA7564



**Flat Tasting Spoon**  
3 3/8"  
MPA7576



**Oval Tasting Spoon**  
3"  
MPA7569



**Oval Tasting Spoon w/ Holes**  
3"  
MPA7568



**Shallow Tasting Spoon**  
2 3/4"  
MPA7573



**Shallow Tasting Spoon w/ Holes**  
2 3/4"  
MPA7572

## Vintage Black



**Long-Handled Tasting Spoon**  
4 3/4"  
MPA7567



**Oval Tasting Spoon**  
3"  
MPA7571



**Flat Tasting Spoon**  
3 3/8"  
MPA7578



**Shallow Tasting Spoon**  
2 3/4"  
MPA7575

## Vintage Gold



**Long-Handled Tasting Spoon**  
4 3/4"  
MPA7566



**Oval Tasting Spoon**  
3"  
MPA7570



**Flat Tasting Spoon**  
3 3/8"  
MPA7577



**Shallow Tasting Spoon**  
2 3/4"  
MPA7574





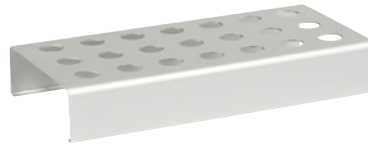
# Les Essences

ALUMINUM | VINTAGE

## Vintage



**Lollipops Support**  
L 9 1/2" W 4 3/4" H 1 5/8"  
MPA7585



**Cones Support**  
L 9 1/2" W 4 3/4" H 1 5/8"  
MPA7586



**Oak Wood Tray**  
L 9 1/2" W 4 3/4" H 3/8"  
MPA7587

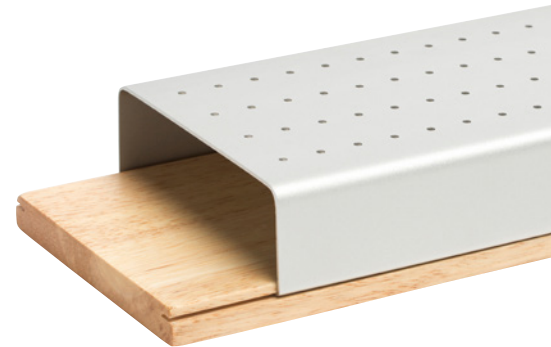
Fits MPA7585, 7586



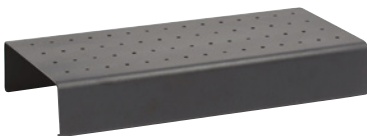
**Skewers Support**  
L 9 1/2" W 2 3/8" H 1 1/8"  
MPA7584



**Tacos Support**  
L 9 1/2" W 4 3/4" H 1 5/8"  
MPA7583



## Vintage Black



**Lollipops Support**  
L 9 1/2" W 4 3/4" H 1 5/8"  
MPA7594



**Cones Support**  
L 9 1/2" W 4 3/4" H 1 5/8"  
MPA7595



**Oak Wood Tray**  
L 9 1/2" W 4 3/4" H 3/8"  
MPA7587

Fits MPA7594, 7595



**Skewers Support**  
L 9 1/2" W 2 3/8" H 1 1/8"  
MPA7593



**Tacos Support**  
L 9 1/2" W 4 3/4" H 1 5/8"  
MPA7592







# Glass Jar

- Transparent body showcases contents for visual appeal
- Sturdy, built-in handle allows for easy carrying and handling
- Perfect for food storage or stylish merchandising displays



**Glass Jar w/ Cork Lid\***  
2 qt | H 10" M 4 1/8"  
MPA10807



**Glass Jar w/ Cork Lid\***  
1 1/4 qt | H 7" M 4 1/8"  
MPA10806

\*Cork lid is hand wash only



L U E S M A  V E G A +  c o m a s



# Ambar

- Thick, tempered glass offers durability and a premium feel
- Enhances brand presentation with elevated style
- Versatile for appetizers, desserts, entrées, or shared plates



**Glass Bowl**  
D 5 7/8" H 1 5/8"  
MPA10789



**Round Glass Stand**  
D 5 1/2" H 1/2"  
MPA11805



**Glass Mini Snack Stand**  
L 5 7/8" W 2 1/8" H 1 3/8"  
MPA11797



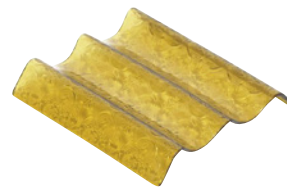
**Glass High Oblong Snack Stand**  
L 8 1/4" W 3 1/2" H 1 3/4"  
MPA11801



**Glass Low Oblong Snack Stand**  
L 8 3/8" W 2 3/4" H 1 1/8"  
MPA11800



**Zigzag Four Taco Stand**  
L 5 1/2" W 9 7/8" H 3/4"  
MPA11807



**Zigzag Two Taco Stand**  
L 5 1/2" W 4 7/8" H 3/4"  
MPA11806

# Care & Use



## Flatware

- Wash flatware before first use.
- Flatware should be washed separately from dinnerware.
- Remove any large food residue immediately after use to prevent staining.
- Wash as soon as possible to prevent pitting from acidic food deposits. Food residue can cause discoloration. A pre-soak in warm water is recommended to loosen food particles.
- Do not mix chrome-nickel 18/10 steel flatware with silver flatware in the flatware basket. Steel is harder than silver and can cause scratches.
- Use upright baskets to prevent scratching and to aid drying.
- Place flatware loosely in the basket to allow the water jets to reach all surfaces effectively.
- If using a low temperature dishwashing system, carefully follow the manufacturer's instructions to avoid staining or corrosion.
- Use a mild dishwasher detergent only along with the right rinse aid as recommended by the manufacturer. Make sure your cleaning agent is void of any abrasive or corrosive qualities.
- Check and adjust the rinse aid dose if stains or discolorations appear on your flatware.
- Easily remove stains or discolorations from stainless steel flatware with a stainless steel care product.
- Always use special salt to soften dishwasher water. Make sure no salt enters the rinse cycle. Rinse again if in doubt. A high concentration of salt can damage flatware.
- Ensure no rusty iron or steel objects are washed together with stainless steel flatware. Rinsing them together can transfer rust. Regularly check that the dishwasher basket is free from rust damage. Use a stainless steel cleaner to remove rust stains if necessary.
- Follow the instructions in your dishwasher manual.
- The flatware can dry spotlessly if the water from the last rinse drips off cleanly.
- Remove flatware promptly at the end of the wash cycle. If this isn't possible, leave the dishwasher door open for at least 5 - 10 minutes immediately after the end of the cycle to dry condensation and prevent watermarks.
- Dry manually (especially the blades) with a soft cloth if needed.
- Be sure flatware is completely dry before storing in a dry location away from the kitchen.



## Steak Knives

### **WOOD HANDLED KNIVES**

- Handwashing is recommended for the best performance and optimal product life
- Wash knives with warm water and a mild detergent, rinse well and dry thoroughly
- Water and harsh detergents will dull the finish and dry out the handles
- It is recommended that the wooden handles be oiled as needed

### **ABS (RESIN) HANDLED KNIVES**

- Low temp dishwasher safe
- Wash knives with warm water and a mild detergent,
- Rinse well and dry thoroughly
- Not recommended for high temp dishwashers that exceed 167°F / 75°C
- Knives should not be exposed to extreme temperature changes, which will cause the ABS handle material to crack over time

### **STAINLESS STEEL KNIVES**

- Dishwasher safe
- Wash knives with warm water and a mild detergent, rinse well and dry thoroughly
- Use upright baskets to prevent scratching and to aid drying

### **BLADE SHARPENING**

- Serrated blades cannot be sharpened
- Blades with no serrations can be sharpened as needed
- The frequency will depend on how often the knives are used and how well they are maintained

### **THINGS TO AVOID**

- Avoid soaking knives; they should be cleaned immediately after use to prevent damage caused by certain foods
  - Avoid using abrasive cleaners, scouring pads, oven cleaners or cleaners containing chlorine bleach or citric extracts
  - Avoid cutting on hard surfaces such as stone, metal or glass
  - Use upright baskets to prevent detergent damage to custom decorations, logos or brand marks.
- 

## Ambar Glass Tableware

- Dishwasher safe
  - After washing, remove basket and leave to cool and dry
  - Never use glass to carry or store flatware
- 

## Glass Jar

- Cork lid is handwash only
- Glass jar is dishwasher safe
- After washing, remove basket and leave to cool and dry
- Never use glass to carry or store flatware
- Use properly sized compartmented glass racks

GLOBAL  
TABLEWARE  
COLLECTIVE

265 West Federal St, Youngstown, OH 44503  
[www.globaltablewarecollective.com](http://www.globaltablewarecollective.com)

**LCGTCCMS825**