



Plantation Prestige

COMMERCIAL FURNITURE

2024 OUTDOOR CATALOG



Furniture

- Frames are constructed of high strength tubular aluminum and steel.
 - Most all dining, side and bar seating is stackable, an excellent characteristic when furniture is stored during the off-season.
 - All furniture frames are warranted by Plantation Prestige for 3 years. Please visit plantationprestige.com for more information.
 - Our furniture features fully-welded frames for strength and stability.
 - Metal furniture is electrostatically powder coated to resist corrosion, chipping, scratching and ultraviolet rays.
-



Umbrellas

- We offer several sizes of umbrellas, as well as a cantilever with a complete 360°.
 - Umbrella bases to fit almost any need – portable, in ground, free standing, etc
 - Umbrellas come with either Sunbrella® or Recacril® fabrics. Both are solution dyed fabrics, made to handle the outdoor elements.
 - Customization of umbrellas is available using your choice of fabrics or by adding your logo for optimal visibility.
-



Deep Seating

- All deep seating furniture is made of aluminum frames, which will not rust when used in the outdoor environment.
 - Our pieces are wrapped in an all-weather wicker, which is a strong polymer, specifically designed for outdoor use.
 - All cushions are made with Sunbrella® fabric, and can be customized to match your color scheme.
 - Most of our deep seating collections will have accompanying tables and chairs.
 - All of our frames are warranted by Plantation Prestige for 3 years. Please visit plantationprestige.com for more information.
-



Additional Products

- Benches – Multiple bench options are available to complete your outdoor needs.
- Waste Receptacles – Coordinating fully steel option with rain bonnet.
- Heaters – Various styles as well as fire tables.



Caredo Collection

Plantation Prestige COMMERCIAL FURNITURE

Plantation Prestige Commercial Furniture is proud to offer our line of commercial and hospitality furnishings. Plantation Prestige Commercial Furniture is dedicated to providing superior quality furnishings to the commercial and hospitality industry with a commitment to Design, Quality, Service and Execution. Plantation Prestige Commercial Furniture brings years of experience at making quality outdoor furniture to the commercial and hospitality market.

We are dedicated to providing fresh innovative designs that meet the space and aesthetic needs of our customers. Plantation Prestige Commercial Furniture has an in-house design team with many years of design and fabricating experience. We travel the world for design inspiration and have the capability to design custom products to fit your needs.

We are proud to introduce our 2024 line and look forward to servicing your furniture needs.

Featured New Products!

New products to be announced for the year of 2024. Contact your sales representative for more information.



Tri-Color Pic Nic Table | Page 19



Durango Seating with Fire Table | Page 12



Savannah Dining Chair | Page 15



Montana Collection

All Steel Frame Collections

Caredo

The Caredo dining chair offers great lumbar support for comfort and is stackable for easy out of the way storage. Is stylish and durable, will stand the test of time in any commercial setting.

** This collection is stackable!*

Offered in charcoal, bronze, and platinum finishes



Caredo Dining Chair

2171100-04
25D x 24W x 35.5H



Caredo Bar Stool

2170300-04
33D x 24W x 51H

Benson & Rockport

These two collections are similar with a stylish rounded back, and comfortable breathable seating for any outdoor area. Benson comes in a dining chair and bar stool while Rockport comes in a dining chair only.

** This collection is stackable!*

Offered in charcoal and platinum finishes



Benson Dining Chair

2181100-04
21.5D x 22W x 35H



Benson Bar Stool

2180300-02
21.5D x 22W x 45H



Rockport Dining Chair

2041100-04
26D x 22W x 33H

Montana

The Montana side chair, dining chair, and barstool offer a waterfall front edge design for a more comfortable feel when sitting in these pieces. The Montana seating collection is a grand combination of durability, comfort and style.

** This collection is stackable!*

Offered in charcoal and bronze finishes



Montana Dining Chair

2021100-04
21D x 22W x 33H



Montana Side Chair

2020700-04
21D x 19W x 33H



Montana Barstool

2020300-02
21D x 19W x 41H



Nantucket Side Chairs

All Aluminum Frame Collections

Aspen & Tahiti

These two new chairs are all aluminum, making them lightweight, yet very functional in your outdoor space.

** Chairs are stackable*

New for 2024!



Aspen Dining Chair

8220700-04
21D x 16W x 33H
Charcoal
Gunmetal Grey
Platinum



Tahiti Dining Chair

8231100-02
26D x 22W x 33H
Gunmetal Frame
Grey sling seat
Grey rope back

Antigua & Cayman

A timeless classic design featuring a variegated resin weave, stylish and traditional for any outdoor setting. Great for any outdoor area especially along the coast or more tropical regions. The all-aluminum frame has a hand applied finish, giving the appearance of wood, but in fact is metal and withstand the outdoor elements very well. Chairs are stackable, making it easy to store away when needed.

** Chairs are stackable, Barstool is not*

Cayman Chair and Barstool available in black and white or coffee and beige



Antigua Side Chair

2130700-0480
22D x 17.5W x 34H



Antigua Bar Stool

2130300-0280
22D x 18W x 45H



Cayman Side Chair

2140700-04
22D x 17.5W x 34H
Coffee & Beige
Black & White



Cayman Bar Stool

2140300-02
22D x 18W x 45H
Coffee & Beige
Black & White

Nantucket

The Nantucket side chair and barstool

bring a modern design to your outdoor space. The all-aluminum frame and back, with grey woven cord for the seat will update your patio with a fresh look, while providing comfort with this NEW collection.

** Chairs are stackable, Barstool is not*

Gunmetal grey with grey resin rope weave
Black frame with Barnwood rope weave



Nantucket Side Chair

8240700-04
19D x 19W x 32H



Nantucket Barstool

8240300-02
19D x 19W x 43H





Durango

Durango is a refined rustic collection, featuring a faux wood with an aluminum frame. Not only does it have a classic slat, but combines a curved ergonomic design for comfortable seating. It's handsome presence still affords a light-weight, stackable chair for easy storage.

The Durango collection is offered in a variety of finishes listed below.

** Chairs are stackable, barstools are not*



Durango Dining Chair

8771100-04
23D x 23W x 36H



Durango Side Chair

8770700-04
23D x 18.5W x 36H



Durango Backless Barstool

8770310-02
16D x 13W x 28H



Durango Barstool

8770300-02
23D x 18.5W x 47H



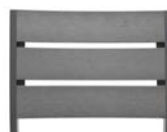
(51) Black Frame
Barnwood



(52) White Frame
Honey



(53) Bronze Frame
Teak Faux Wood



(55) Gunmetal Frame
Grey Faux Wood



(57) Platinum Frame
Teak Faux Wood



(59) Black Frame
Tri-Color

New Color!



Durango Weave Collection

Durango Weave

The Durango Weave is an appealing addition to our Durango collection. The aluminum frame encompasses an elegant all-weather weave to give the chair texture and design. This collection would look great with the Durango tables shown on pages 14-15.

The Durango Weave collection is offered in a grey weave with a gun metal frame.

** Chairs are stackable, bar stools are not*



Durango Dining Chair

8761100-0455
23D x 23W x 36H



Durango Side Chair

8760700-0455
23D x 18.5W x 36H



Durango Bar Stool

8760300-0255
23D x 18.5W x 47H

****New Chestnut finish can be seen on page 15!***

New for 2024!



Telluride Deep Seating Collection

New Deep Seating | Telluride

Expanding our deep seating offerings allows us to offer high quality products for your resorts, restaurants, pools or any hospitality avenue looking for a modern, upscale look. Introducing the Telluride and the Acadia collection.

Telluride comes with a barnwood aluminum slat and a matte black aluminum frame (matching our Durango collection in barnwood). Sunbrella cushions are included in Cast Silver fabric.



Telluride Lounge Chair

8820600-0140433
36D x 30W x 31H



Telluride Right Side Chair

8820500-0140433
36D x 30W x 31H



Telluride Left Side Chair

8820400-0140433
36D x 30W x 31H



Telluride Corner Chair

8820100-0140433
36D x 36W x 31H



Telluride Middle Chair

8820200-0140433
36D x 26W x 31H



Telluride Chat Table

8822547-0150
25D x 47W x 17H

New for 2024!

Acadia Deep Seating Collection

New Deep Seating | Acadia

Acadia features the modern look of a rope weave, in gunmetal grey color (matching our Durango collection in gunmetal grey). The frame is gunmetal in color, all aluminum and the cushion is Sunbrella Granite fabric. Imagine the possibilities when adding either of these collections to our Durango tables and seating, for a complete design in an outdoor space!



Acadia Lounge Chair

8810600-015402
33D x 26W x 31H



Acadia Right Side Chair

8810500-015402
33D x 26W x 31H



Acadia Left Side Chair

8810400-015402
33D x 26W x 31H



Acadia Corner Chair

8810100-015402
33D x 33W x 31H



Acadia Middle Chair

8810200-015402
33D x 24W x 18H



Acadia Chat Table

8812547-0155
23D x 47W x 16H



Durango Seating with Fire Table

Durango Deep Seating

The Durango Deep Seating collection is designed to create a comfortable option, styled in a modern, yet subtle grey wicker to upgrade your outdoor space. Each seating piece fastens easily to another, offering multiple configurations to furnish your outdoor area accordingly. The Durango Deep Seating pieces are constructed of an all-weather woven wicker, wrapped around an all-aluminum, highly durable frame for the outdoors.

** Sunbrella® cushions included with limited colors available for an upcharge (ask your rep for more information).*

** Shown in Canvas Granite.*



Right Hand Section

8770500-015402
37.4D x 29.5W x 34.6H



Corner Section

8770100-015402
37.4D x 37.4W x 34.6H



Left Hand Section

8770400-015402
37.4D x 29.5W x 34.6H



Middle Section

8770200-025402
37.8D x 25.8W x 34.6H



Double Chaise Lounge

8770800-015402
84D x 61.5W x 36H



Lounge Chair

8770600-015402
37D x 34W x 35H



Chaise Lounge

8770900-025402
81D x 29W x 21H



Durango Side Table

8772121-0155
21D x 21W x 18H



Durango Coffee Table

8772747-0155
27D x 47W x 18H



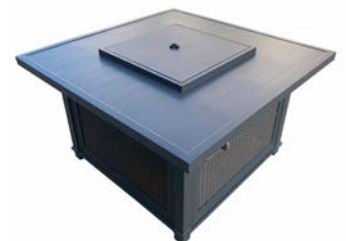
Wicker Coffee Table

8772746-0155
27D x 46W x 17H



Wicker End Table

8771836-0155
18D x 36W x 17H



Fire Table

8774242-0155
42D x 42W x 22H

New for 2024!



Key Largo Collection

Key Largo

The timeless design of classic wicker has been recreated with our beautiful Key Largo deep seating. Made of a woven all-weather resin, and crafted into a unique arrangement, with many seating possibilities. Beauty and functionality at its best with built-in storage within the armrest, and each piece is sold separately to meet your outdoor needs. Shown here with our Charleston Fire Table. Fully equipped with gas burner and storage for propane tank. Simple turn of the dial to illuminate your outdoor area.

** Sunbrella® cushions included with limited colors available for an upcharge (ask your rep for more information).*

** Shown here in Sesame Linen.*

** Decorative pillows not included*



Curved Sectional

8780200-028318
34D x 47W x 32H



Triangular Storage Section

8782134-01
34D x 21W x 32H



Charleston Fire Table

8742500-01
47W x 27H

Savannah *New for 2024!*

The Savannah collection is designed with a hand-woven, all-weather wicker that won't fade or split, leaving you with a worry-free solution all year long. The frame is constructed of commercial grade tubular aluminum, therefore rust free and lighter weight for easier mobility. This collection affords you many options and varieties within your outdoor seating space. The aluminum chat table has a durable finish that mimics a rich wood stain.

** Sunbrella® cushions included with limited colors available for an upcharge (ask your rep for more information).*

** Shown here in Henna.*

** Decorative pillows not included.*



Savannah Corner Section

8790100-015422
35D x 35W x 34H

**also stocked in Henna*



Savannah Middle Section

8790200-025422
35D x 31W x 34H

**also stocked in Henna*



Savannah Coffee Table

8794040-01
40D x 40W x 20H



Savannah Chaise Lounge

**New pieces added to the Savannah Collection for 2024!*



Savannah Dining Chair

8761100-0467
23D x 23W x 36H



Savannah Side Chair

8760700-0467
23D x 18.5W x 36H



Savannah Barstool

8760300-0267
23D x 18.5W x 47H



Savannah Chaise Lounge

8790900-025422
81D x 29W x 21H



Savannah Bar Table

8793333-0167
33D x 33W x 40H
Umbrella hole



Savannah Dining Table

8793636-0167
36D x 36W x 29H
Umbrella hole



Santa Cruz

The Santa Cruz collection is designed using the latest in color schemes for the new year – Greystone and barnwood. It is made with a hand-woven, all-weather wicker that won't fade or split, leaving you with a worry-free solution all year long. The frame is constructed of commercial grade tubular aluminum, therefore rust free and lighter weight for easier mobility. This collection, complete with has so many possibilities that can certainly fill any outdoor space.* Sunbrella® cushions included with limited colors available for an upcharge (ask your rep for more information). Shown here in Cast Shale.



Right Hand Section

8562500-0240432
31.5D x 60W x 28H



Left Hand Section

8562400-0240432
31.5D x 60W x 28H



Santa Cruz Collection



Corner Section

8560100-0140432
31.5D x 31.5W x 28H



Middle Section

8560200-0240432
31.5D x 27W x 28H



Lounge Chair

8560600-0140432
30.7D x 31.5W x 28H



Dining Chair

8561100-0240432
25D x 23W x 33H



Side Table

8562020-0156
19D x 19W x 22H



Coffee Table

8563737-0156
37D x 37W x 18H



Dining Table Square

8563535-0156
35D x 35W x 29H

*no umbrella hole



Dining Table Long

8563970-0156
70D x 39W x 29H

*no umbrella hole

Tables / Durango Collection



Durango Collection | Platinum Teak



Dining Table Long

8773053-01
30D x 53W x 29H
Umbrella hole



Dining Table Square

8773030-01 | 30D x 30W x 29H
8773737-01 | 37D x 37W x 29H
Umbrella hole



Bar Table Long

8773361-01
33D x 61W x 40H
Umbrella hole



Bar Table Square

8773333-01
33D x 33W x 40H
Umbrella hole



Dining Community Table

8773076-01
30D x 76W x 29H
Umbrella hole



Dining Table Round

8773600-01 | 36" Round x 29H
8775000-01 | 50" Round x 29H
Umbrella hole



Bench with Arms

8772100-02
23D x 77.5W x 35H



Backless Bench

8772000-01
19.25D x 69W x 17.5H

Frame Finish Options:



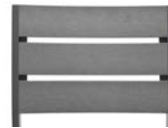
(51) Black Frame
Barnwood



(52) White Frame
Honey



(53) Bronze Frame
Teak Faux Wood



(55) Gunmetal Frame
Grey Faux Wood



(57) Platinum Frame
Teak Faux Wood



(59) Black Frame
Tri-Color



Pic-Nic-Table

8883072-01
Table Top: 30D x 72W
Attached Bench: 15D x 72W
Overall: 77D x 72W
No Umbrella Hole



Pic-Nic-Table

8882548-01
Table Top: 25D x 48W
Attached Bench: 10D x 48W
Overall: 62D x 48W
Umbrella Hole



Quad Pic-Nic-Table

8884747-01
Table Top: 46D x 46W
Attached Bench: 10D x 46W
Overall: 56D x 56W
Umbrella Hole



Avondale Table w/ Bench

8887065-0352
Overall: 36D x 70W
ADA Available
No Umbrella Hole

Custom Solid Acrylic Table Tops

Plantation Prestige is pleased to offer a composite, solid acrylic table top. These molded table tops are a great choice wherever durability, attractive appearance & performance are desired to enhance the outdoor seating space. These high quality commercial grade, solid acrylic tops are custom made in various sizes and colors, made to withstand the elements of the outdoor environment. Please contact your local sales representative for further details to place an order.

Features:

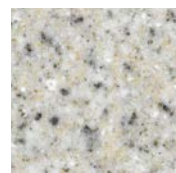
- Nonporous surface to keep dirt or contaminants from penetrating the top, makes top easy to clean.
- Consistent color through the material thickness for maintaining an attractive appearance.
- High resistance to UV fading in intense sun locations.
- Resistance to freeze-thaw cycles.

2413000-01 | 30" Round
2413030-01 | 30" x 30"
2413600-01 | 36" Round
2413636-01 | 36" x 36"
2413048-01 | 30" x 48"

- For 30" table tops, use bases 2342700, 2332700, and 2322700
- For 36" table tops, use bases 2343700, 2333700, and 2323700
- For 30" x 48" table top, use base 2353048

See table bases on page 19.
Custom sizes available.

Please contact your sales rep for details. Umbrella holes optional.



Brown Matrix (02)



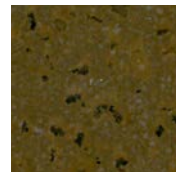
White Quartz (08)



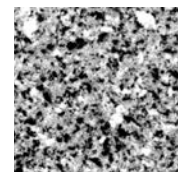
Brownstone (03)



Wheat (12)



Cocoa (04)



Black Matrix (06)

Mesh Tables

Please contact your local representative for further information



**Mesh Top with
ADA Base**

2203048-0150ADA
30D x 48W



**Mesh Top with
Butterfly Base**

2203048-0150BB
30D x 48W



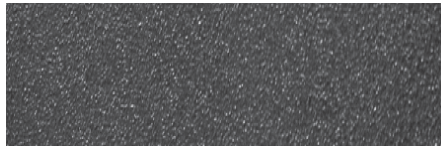
Build Your Own Table

Plantation Prestige Commercial Furniture offers a wide variety of customizable table options that are suitable for any commercial setting. Choose your base, then choose your top and create one of many potential combinations!

Frame Finish Options



Bronze (20)



Charcoal (50)



Platinum (70)

Café Tables



Micromesh Tops

2202430-01 | 24" x 30"
2203030-01 | 30" x 30"
2203000-01 | 30" Round



Solid Metal Tops

2212430-01 | 24" x 30"
2213030-01 | 30" x 30"
2213000-01 | 30" Round



Acrylic Solid Tops

2413030-01 | 30" x 30"
2413000-01 | 30" Round

Table Bases



Butterfly Base

2342700-01
29H x 28 Diagonal Leg



Spun Dining Base

2322700-01
29H x 22 Diameter Base



Spun Bar Base

2325700-01
40H x 22 Diameter Base

Dining Tables



Micromesh Tops

2203636-01 | 36" x 36"
2203600-01 | 36" Round
2204200-01 | 42" Round



Solid Metal Tops

2213636-01 | 36" x 36"
2214600-01 | 46" Round



Acrylic Solid Tops

2413636-01 | 36" x 36"
2413048-01 | 30" x 48"
2413600-01 | 36" Round



Butterfly Base

2343700-01
29H x 32 Diagonal Leg



Spun Dining Base

2323700-01
29H x 30 Diameter Base



Spun Bar Base

2324700-01
40H x 30 Diameter Base



Dining T-Base for 30x48 Top

2353048-01
29H x 32 Leg Spread

**All micromesh and solid metal tops include an umbrella hole except the 24 x 30 size.*

Poolside Designs

Treat your guests to the classic outdoor comfort of our poolside designs. The collection features stackable furniture, saving space when not in use, and offers comfortable, stylish options that will hold up against the environment. With an array of combinations with sling colors, as well as frame finish options, these luxurious additions will meet all your hospitality needs!

- Multiple color options for slings
- Multiple color options for frame finishes
- Dining chairs/chaise lounges are all stackable
- Handcrafted in the USA
- 3-year frame warranty
- Recyclable



Sarasota

Transform your outdoor décor by adding the unique style and comfort of the Sarasota collection, combining aluminum tubing and a beautiful design to make each piece stand out in any setting.



Dining Chair
4051100-04
28D x 24W x 35H



Chaise Lounge
4050900-04
77D X 29W X 37H

Miramar

The Miramar collection offers a bold, sleek design that brings sophistication to any patio, pool or restaurant space. Indulge in the luxury of the new age look with the Urban Sling design.



Dining Chair

4021100-03
23D x 25W x 34H



Chaise Lounge

4020900-03
79.5D x 31W x 35.5H

Navarre

Indulge in the luxury of the new age look with the Navarre Sling design. With the sleek straight lines of the all-aluminum frame, an urban feel can be brought to your hospitality space.



Dining Chair

4031100-03
28D x 24W x 35H



Chaise Lounge

4030900-04
78.5D x 25W x 38H

Panama

Featuring a wide arm for increased comfort, the Panama collection provides guests the ultimate in relaxation, striking the perfect balance between comfort and luxury.



Dining Chair

4041100-04
28D x 24.5W 34.5H



Chaise Lounge

4040900-04
76D x 29.5W x 38.5H

Customize!

Customize your collection with various sling colors and frame options, shown on page 23.



Aluminum Adirondack

Timeless style using aluminum materials make this a beautiful outdoor furniture set, season after season. Choose from all aluminum or aluminum frame with sling.

** Customize your collection with various sling colors and frame options! Ask rep for details*

**Decorative pillows not included*



All Aluminum Adirondack

4061100-01
35 x 30W x 36H



Aluminum Adirondack with sling

4071100-01
30D x 31W x 38H

Poolside Accessories



20" Poolside Table

20" x 20" x 18"
4082020-01



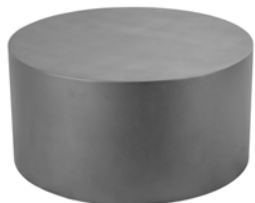
24" Poolside Table

24" x 24" x 18"
4082424-01



18" Drum Side Table

18" x 18" x 19"
4091800-01



Drum Chat Table

36" x 36" x 19"
4093600-01



Waste Receptacle

27.5D x 27.5W x 31H
7927800-02



6' Bench

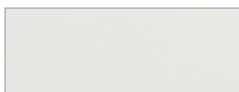
27D x 72W x 38H
7922100-01

Poolside/Hospitality Frame Finishes

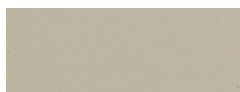
* Customize your collection with various sling colors and frame options! Ask rep for details



Mahogany 64



Platinum 70



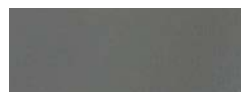
Champagne 33



Midnight 66



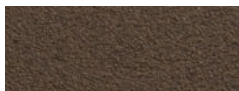
Sand 12



Titanium 81



Charcoal 50



Espresso 84



Indigo 78



White 52



Red RED



Lime LGR



Forest Green FGR



Costa COS



Turquoise TQA



Orange ORG



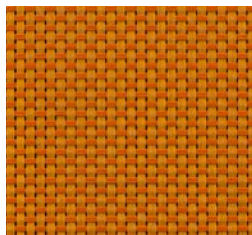
Purple PRP



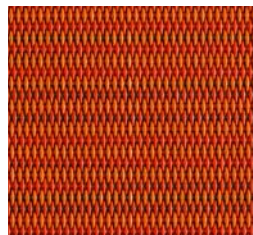
Yellow YLW

Poolside/Hospitality Sling Options

* Customize your collection with various sling colors and frame options! Ask rep for details



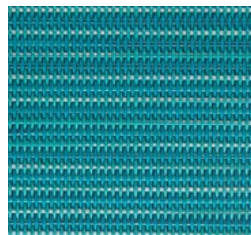
Orange 7842



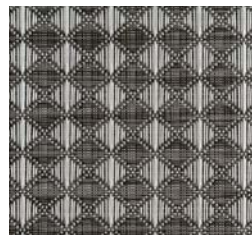
Phoenix 8736



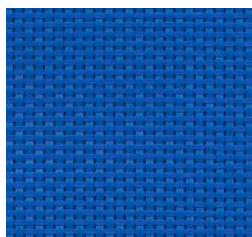
Admiral 7834



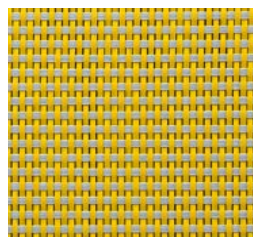
Turquoise 7833



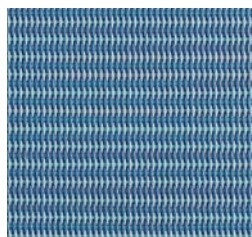
Graphite 6915



Costa 7360



Lemon 7689



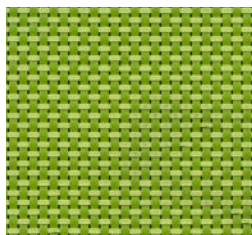
Steel 1367



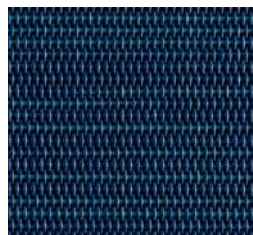
Seashell 9309



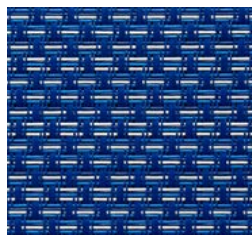
Metallic Tweed 7328



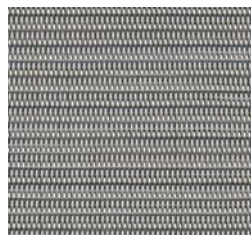
Lime 7841



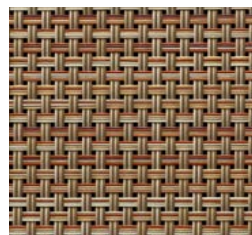
Captain Navy 9023



Nautical 7685



Platinum Tweed 5678



Chestnut Tweed 6901

Laguna Collection

by Plantation Prestige



Laguna Resin Seating

Crafted with the latest in technology, Laguna products are designed to be functional, durable and ergonomic with modern fashion, the latest trends and the upmost in style. With consideration to every precise detail, we are pleased to bring you easy to use, environmentally friendly products that strictly adhere to recyclable policies using only ecologically sound materials.

Laguna Collection

Please contact your local representative for further information



Grayton Arm Chair

2721100-02
22.2D x 22.1W x 32.3H



Grayton Side Chair

2720700-02
22.2D x 19.8W x 32.3H



Perdido Arm Chair

2761100-02
23.6D x 22.4W x 31.5H



Henderson Arm Chair

2741100-02
23.6D x 22.8W x 31.3H



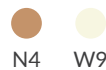
Panama Side Chair

2780700-04
22.8D x 18.9W x 34.6H



Alys Side Chair

2790700-02
21.3D x 20.3W x 34.8H



Rosemary Side Chair

2770700-02
20.7D x 21.1W x 29.9H



Walton Side Chair

2750700-04
20.7D x 19.5W x 32.3H



Grayton Barstool

2720300-01
22D x 20W x 30H



Panama Barstool

2780300-01
22D x 19W x 30H



Walton Barstool

2750300-01
21D x 20W x 30H



Laguna Side Table

2761414-02
14.8D x 14.8W x 14.6H





Edison Cantilever Umbrella

The Edison cantilever umbrella combines style with size, strength and durability for those larger open spaces that need more shade protection from the sunlight. Edison is the sister cantilever to the popular Avalon series, but offered in a larger 13' octagon, and 10' x 10' square size. Like Avalon, it features a full 360 degree rotation and infinity tilt which allow for easy opening and closing. The Edison cantilever features heavy gauge extruded aluminum and stainless steel parts on a marine grade, corrosion resistant aluminum frame, making the Edison cantilever suitable for all commercial applications. The Edison cantilever has a three year frame warranty and is available in additional powder coated frame finishes for an additional cost.

Please contact your local representative for further information.

**Base options can be found on page 31 and fabric options on page 32.*

Features:

- All-aluminum extruded mast, combined with stainless steel parts.
- Crank lift for smooth and effortless operation, offering countless angles for shade from the sun.
- Full 360 degree rotation
- High impact resin critical joints for greater flexibility.
- Wind stabilizer kit and black protective cover bag included.

Finish:

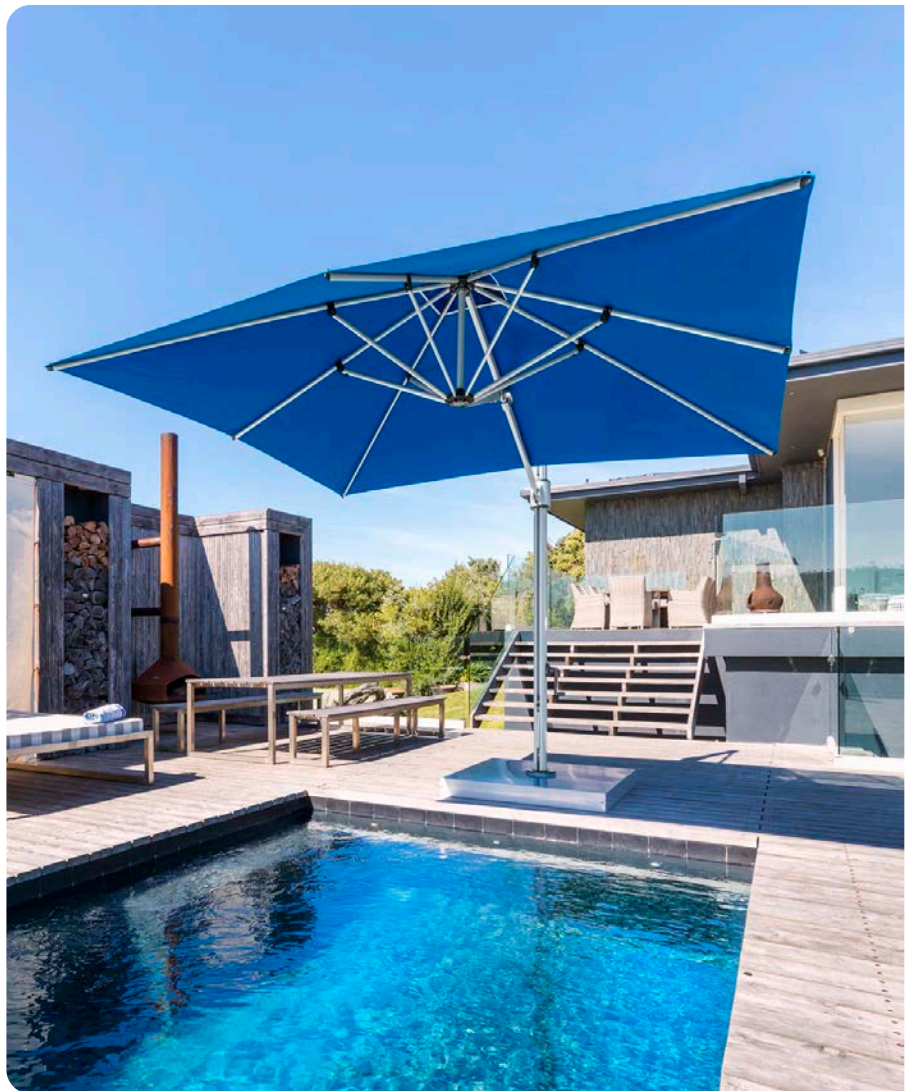
Matte Silver (additional powder coat finishes available for an upcharge, contact your local rep for more information)

Edison cantilever umbrellas have been tested successfully in extreme weather conditions up to 35 mph, however we strongly recommend closing your umbrella when not in use. Wind ratings do not form part of, nor fall under any PPCF warranties.

Item numbers:

9020-01 10' x 10' square cantilever

9021-01 13' octagon cantilever





Avalon Cantilever Umbrella

The Avalon cantilever umbrellas provide style with size for the outdoor commercial space. Its 360 degree rotation and multiple tilting angles for easy opening and closing, offer greater flexibility and make this umbrella a great option for shading any commercial environment. Avalon cantilever umbrellas are made of heavy gauge extruded aluminum and stainless steel parts on a marine grade corrosion resistant frame. This cantilever umbrella, available in two sizes, is suitable for use in low to moderate wind conditions and ensures hours of protection from the sun and light rain. The Avalon cantilever frame and frame finish has a 3 year limited commercial warranty.

Please contact your local representative for further information.

**Base options can be found on page 31 and fabric options on page 32.*

Features:

- All-aluminum extruded mast is strong and durable, built for strength in any commercial setting.
- Crank lift designed for smooth and effortless operation, providing countless tilt angles for shade from the sun.
- Full 360 degree rotation
- High impact resin critical joints give greater flexibility.
- Wind stabilizer kit and black protective cover bag included.
- 3 year limited warranty on frame

Finish:

Matte Silver

Avalon cantilever umbrellas have been tested successfully in extreme weather conditions up to 25 mph, however we strongly recommend closing your umbrella when not in use. Wind ratings do not form part of, nor fall under any PPCF warranties.

Item numbers:

9018-01 9' x 9' square cantilever

9019-01 11' octagon cantilever





Geneva Umbrellas

The Geneva umbrellas combine luxury with style to create a sophisticated look in any outdoor setting. The sturdy all-aluminum frame and easy glide pulley system allows for effortless opening and closing. Also includes a solid marine grade, chrome-plated aluminum finial for an enhanced appearance.

Please contact your local representative for further information.

**Base options can be found on page 31 and fabric options on page 32.*

Features:

- All Aluminum Frame Polished Silver Pole and Ribs, Pulley System w/Locking Pin
- 1.5" diameter two piece aluminum
- 1/8" thickness pole
- Heavy gauge pulley system for easy opening and closing
- Reinforced four-layer pockets prevent fabric from tearing
- Stainless steel hardware
- Solid marine grade chrome plated aluminum finial
- 3 year limited warranty on frame

Item numbers:

9115-01 6.5' x 6.5' square
9116-01 7.5' x 7.5' square
9117-01 7.5' octagon
9118-01 9' octagon
9119-01 11' octagon





Montego Umbrellas

The Montego umbrellas offer exceptional durability and design for the outdoor environment, offered in 3 different frame finish colors and 4 different sizes. The all-aluminum pole and durable fiberglass ribs allow for greater flexibility in stronger winds. Montego has two lift options, a pulley system design with a locking hook to secure upper frame into pole and keep cord out of reach when in use. There is also a solid stainless steel handle option for manually cranking the umbrella to its upright position. The Montego umbrella is designed to last and will give your outdoor space an elegant look for years to come. The Montego frame and frame finish has a 3 year limited commercial warranty. The manual crank mechanism is warranted for 2 years.

Please contact your local representative for further information.

**Base options can be found on page 31 and fabric options on page 32.*

Features:

- 1.5" diameter all-aluminum 2 pc pole
- 1/2" fiberglass ribs and struts for maximum strength and flexibility
- 1/8" aluminum pole wall thickness for great strength and durability
- Optional lift systems for easy opening and closing - solid stainless steel crank for CL series
- Reinforced four-layer pockets prevent fabric from tearing
- Stainless steel hardware throughout
- 3 year limited warranty on frame

Finish:

- 72 - Matte Silver
- 52 - Matte Black
- 21 - Bronze
- 55 - Gunmetal

Montego umbrellas have been tested successfully in extreme weather conditions up to 40 MPH, however we strongly recommend closing your umbrella when not in use, or when sustained winds exceed 25 MPH. Wind ratings do not form part of, or fall under any PPCF warranties.



Item numbers:

Pulley Lift

9965PL-01
9976PL-01
9975PL-01
9919PL-01
9911PL-01

Crank Lift

9965CL-01
9976CL-01
9975CL-01
9919CL-01
9911CL-01

6.5' x 6.5' square
7.5' x 7.5' square
7.5' octagon
9' octagon
11' octagon

Promenade Umbrellas

The Promenade umbrellas are simple in design yet provide the classic traditional look for your every day market umbrella needs. The 2 piece threaded aluminum pole with fiberglass rib umbrella frame is suitable for any large or small restaurant type properties. The promenade umbrellas will enhance any outdoor patio, and are easy to push upright to multiple desired hole positions, and lock in to place with the attached locking pin. Available in 2 sizes and a wide variety of vibrant Sunbrella colors. Also makes for a nice logo branded umbrella if desired. Promenade umbrellas have a 1 year warranty.

Please contact your local representative for further information.

**Base options can be found on page 31 and fabric options on page 32.*



6' Square Aluminum Market
Umbrella with Fiberglass Ribs
and Manual Lift

Black Pole - 9602-01



7' Octagonal Aluminum Market
Umbrella with Fiberglass Ribs
and Manual Lift

Black Pole - 9720-01

Features:

- All-aluminum threaded 2 pc pole for great support and strength
- 1.5" diameter pole
- Reinforced fiberglass ribbed upper frame
- Stainless steel attached locking pin
- Double stitched two layer pockets to resist fabric tears at pressure points on edges of umbrella
- Replaceable canopies and some parts are available if ever needed
- 1 year limited warranty on frame



Umbrella Bases

Please contact your local representative for further information

Table Use



50 lb. Resin Coated Concrete Base

Matte Silver - 2239850-0170
Black - 2239850-0150
Bronze - 2239850-0121
16" Round



70 lb Galvanized Steel

22398070-0170
24" Round
**other weights available*



48 lb. Freestanding Umbrella Base

2239848-01
Charcoal - 2239848-0150
Gunmetal - 2239848-0155
Platinum - 2239848-0170
19" Round



Freestanding



75 lb. Freestanding Umbrella Base

Silver Mist - 2239875-0174
Black - 2239875-0150
Bronze - 2239875-0121
24" Square with wheels



80 lb. Freestanding Resin Coated Umbrella Base

2239882-0150
20.5" Round



100 lb. Freestanding Concrete Filled Umbrella Base

Silver Mist - 22398100-0174
Black - 22398100-0150
24" Round with wheels



150 lb. Freestanding Umbrella Base

2230150-0170
36" Round

Cantilever



Direct Surface Mount for Cantilever Umbrellas

Avalon - 2239812-0150
Edison - 2239813-0150
12.5" Round



In-Ground Mount for Cantilever Umbrellas

Avalon - 2239818-0170
Edison - 2239820-0170
8" Round



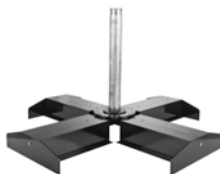
Avalon Cantilever Steel Plate Base

2233350-0170
40" x 2", 335 lbs
double stacked plates



Edison Cantilever Steel Plate Base

2235550-0170
40" x 2", 555 lbs
triple stacked plates



Modular Cross Brace for Cantilever Umbrellas

2239816-0150
39" x 39"



Base Cover with Modular Cross Brace

Silver Mist - 2239817-0174
Matte Black - 2239817-0152
40" x 40"
concrete pavers not included



Edison Cross Brace with Aluminum Cover

2239821-0172
45" x 45"
concrete pavers included



We offer Sunbrella canvas solids that are 7 ounce 100% upholstery grade, solution-dyed acrylic material. Sunbrella offers a 5 year warranty on fading under normal atmospheric conditions.

***Ask your sales rep for fabric lead time. More colors may be available for your choosing.

Canvas Antique Beige
5422

Canvas Heather Beige
5476

Canvas Teak
5488

Canvas Bay Brown
5432

Canvas Henna
5407

Canvas Brick
5409

Canvas Jockey Red
5403

Canvas Tuscan
5417

Canvas Sunflower
5457

Canvas Wheat
5414

Canvas Parrot
5405

Canvas Forest Green
5446

Canvas Teal
5456

Canvas Aruba
5416

Canvas Pacific Blue
5401

Canvas Sapphire Blue
5452

Canvas Navy
5439

Canvas Black
5408

Canvas Charcoal
54048

Canvas Granite
5402



We offer Recacril fabric which is a 9 ounce 100% marine grade, solution-dyed acrylic material. Recacril offers a 7 year warranty on fading under normal atmospheric conditions.

***Ask your sales rep for fabric lead time. More colors may be available for your choosing.

BGA:
Burgandy

BKA:
Black

BNA:
Brown

CGA:
Cadet Grey

CHGA:
Charcoal

CPA:
Capri

CRA:
Coral

FGA:
Forest Green

LNA:
Linen

LRA:
Logo Red

NBA:
Navy Blue

ORA:
Orange

PBA:
Pacific Blue

PTA:
Pistachio

TQA:
Turquoise

WHA:
White

YLA:
Sunflower

TRA:
Terracotta

JRA
Jockey Red

PKN
Pumpkin

SPH
Sapphire

TNM
Titanium

NSA
Navy Stripe

YSA:
Yellow Stripe

BKSA:
Black Stripe

BSA:
Blue Stripe

OSA:
Orange Stripe

RSA:
Red Stripe

TQSA:
Turquoise Stripe

Customize Your Umbrella!

Choose a solid color, alternate panels or make a complete rainbow with your choice of fabrics!

LOGO YOUR UMBRELLA for a complete look!

Logos may be applied to any umbrella.

- Vectorized .EPS or .AI file is preferred format for artwork. PDF, PSD or high resolution JPEG is also acceptable.
- Artwork must be approved by customer.





Outdoor Patio Heaters

Outdoor patio heaters are essential for those who want to maximize the use of their outdoor spaces year-round. Whether for relaxation or socializing, these heaters offer a perfect solution to keep outdoor areas warm and inviting, allowing people to enjoy the great outdoors even when the weather gets chilly. Our heaters are constructed to withstand various weather conditions, including rain, wind, and snow, depending on their intended use.



Mushroom Heater
Stainless Steel
87" Tall | 32" Round
2244-01



Pyramid Heater
Stainless Steel
96" Tall | 18" (3 sides)
2233-01



Pyramid Heater
Hammered Bronze
96" Tall | 18" (3 sides)
2222-01



Pyramid Heater
Matte Black
96" Tall | 18" (3 sides)
2255-01

**Comes with optional wheels for mobility*

Warranty information

Furniture Frame Warranty

Plantation Prestige Commercial Furniture extends a 3 year limited warranty for our frames to the original end use purchaser as a sign of our dedication to the highest possible quality standards. The warranty is non-transferable and is designed to cover the furniture under normal commercial use.

The extent of the warranty is to cover the material and/or workmanship of the furniture frame and welds. This warranty does not apply to umbrellas, cushions, alternative tops or fabrics.

Alternative Tops, Cushions, Faux Wood Slats and Fabric Slings Warranty

Plantation Prestige Commercial Furniture extends a 1 year limited warranty to the original end use purchaser as a sign of our dedication to the highest possible quality standards. This warranty is non-transferable and is designed to cover the construction of the alternative tops, cushions, slats and slings under normal commercial use.

Umbrella Warranty

Plantation Prestige Commercial Furniture extends a 3 year limited warranty to the original end use purchaser as a sign of our dedication to the highest possible quality standards for the Avalon, Edison, Geneva and Montego umbrella frame and frame finish. If the umbrella is a crank lift, then a 2 year warranty applies to the crank. Promenade umbrellas will have a 1 year warranty to the frame and frame finish. All umbrellas should use a Plantation Prestige Commercial Furniture authorized base. Failure to do so could result in voided warranty.

***Warranty Guidelines

All warranties become void if the furniture has been abused, inadequately maintained, or altered in any way. The warranty also becomes void in the event the furniture has been damaged by acts of nature, calamity and/or misuse. (for example, sunlight refraction on faux wood slats).

If the product is proven to be factory defective, as covered by the warranty, Plantation Prestige Commercial Furniture will repair or replace it at the factory's discretion. In the event the product has been discontinued, Plantation Prestige Commercial Furniture may replace the product with a similar item. All shipping, delivery and packaging costs are the sole responsibility of the owner of the furniture.

To Place an Order

Please submit purchase orders through your local sales rep or contact Plantation Prestige directly for information regarding placing an order. Purchase orders must include part numbers, frame finish, fabric choice, net purchase cost and freight. All freight costs must be applied to order if not being shipped "freight collect."

Plantation Prestige uses multiple shipping locations. Please ask your sales rep if specifics are needed. Full payment required for all orders prior to shipping, unless credit terms have been established. Custom orders may require a deposit and are noncancelable.

To Make a Claim

To make a claim under this warranty, please contact Plantation Prestige Commercial Furniture. All claims for this service must be accompanied by a proof of purchase, photos of defective product and a detailed description of the defect. All Custom Orders are considered final, and deemed not refundable; however, warranty claims may be submitted following the same guidelines as stated herein.

Custom Orders

The term "Custom Orders" applies to all items not stocked on a regular basis by Plantation Prestige Commercial Furniture. Items that are special ordered are namely cushions, slings, acrylic tops, and umbrellas due to the use of fabric not carried in-house, as well as any alteration or logo applied to the umbrella. Custom Order items require a 50% non-refundable deposit; however, claims for defect may be made to our claims department following our standard guidelines.

Freight Claims:

For products shipped 3rd party by Plantation Prestige, all freight claims must include correct paperwork from delivery. All claims must be filed within 48 hours so please inspect product upon arrival.

Plantation Prestige Commercial Furniture

800 Corporate Parkway, Suite 108
Birmingham, AL 35242
205.593.4978
custserv@plantationprestige.com

visit us at www.plantationprestige.com

